



Innovation that excites

# NISSAN PATROL CAB CHASSIS

## Specifications

	DX Leaf 3.0 litre intercooled turbo-diesel	ST Coil 3.0 litre intercooled turbo-diesel
<b>Engine</b>		
3.0 litre common rail intercooled turbo-diesel DOHC	•	•
Displacement (cc)	2953	2953
Bore x stroke (mm)	96 x 102	96 x 102
Max. power (kW@rpm) ECE	118@3400	118@3400
Max. torque (Nm@rpm)	380@2000 - 2400	380@2000 - 2400

<b>Transmission</b>		
5-speed manual	•	•
Ratio 1st manual	4.556	4.556
Ratio 2nd manual	2.625	2.625
Ratio 3rd manual	1.591	1.591
Ratio 4th manual	1.000	1.000
Ratio 5th manual	0.836	0.836
Ratio Reverse manual	4.245	4.245
Final drive manual	4.111	4.111
Transfer ratio - low	1:1	1:1
Transfer ratio - high	2:02	2:02

<b>Dimensions</b>		
Overall length (without tray) (mm)	5115	4940
Overall width (without tray) (mm)	1840/1940 <sup>^</sup>	1940
Overall height (without tray) (mm)	1875	1870
Wheelbase (mm)	2970	2970
Minimum turning circle kerb to kerb (m)	12.5	12.5
Overhang - front	940	940
Overhang - rear	1205	1030
Gross Vehicle Mass (GVM*) (kg)	3400	3150
Tare mass (without tray) kg* including options	2155/2162 <sup>^</sup>	2074
Carrying capacity (kg)	1245/1238 <sup>^</sup>	1076
Ground clearance unladen (mm)	220	235
Approach angle (degrees)	35	35
Departure angle (degrees)	31	32

<b>Rated Towing Capacity*</b>		
Trailer with brakes (kg)	3200	3200
Trailer without brakes (kg)	750	750
Towball download (kg)	See table	See table

<b>Fuel</b>		
Fuel type - diesel	•	•
Main fuel tank capacity (litres)	95	95
Sub fuel tank capacity (litres)	80	80
Fuel consumption l/100km (manual) (combined ADR 81/02 <sup>99</sup> )	11.4	11.4

<b>Mechanical</b>		
Differential lock	•	•
Front ventilated disc brakes	•	•
Rear ventilated disc brakes		•
Rear drum brakes	•	
Limited Slip Differential (LSD)	•	•
Load sensing brake valve	•	•
Manual free wheeling hubs	•	•
Power steering	•	•
Front - 3 link coil suspension	•	•

	DX Leaf 3.0 litre intercooled turbo-diesel	ST Coil 3.0 litre intercooled turbo-diesel
Front stabiliser	•	•
Rear - 5 link coil springs		•
Rear stabiliser		•
Rear - progressive rate leaf springs	•	
Semi floating rear axle		•
Full floating rear axle	•	

<b>Wheels/Tyres</b>		
16x8JJ steel wheels with 265/75R16 tyres	Opt	•
16x5.5F steel wheels with 7.50R16 LT tyres	•	
Full size steel spare wheel	•	•

<b>Interior</b>		
Cruise control	•	•
Keyless entry system	•	•
Seating capacity	2	2
Front bucket seats	•	•
Seat trim	Woven	Moquette
Driver auto up/down power windows	•	•
4 spoke steering wheel	•	•
Tilt adjustable steering column	•	•
6 CD in-dash auto-changer with AM/FM radio, MP3 and iPod <sup>4</sup> connectivity via USB connection		•
Single CD player with AM/FM radio, MP3 and iPod <sup>4</sup> connectivity via USB connection	•	
Bluetooth <sup>®</sup> handsfree phone system	•	•
2 speakers	•	•
12v power socket	•	•
Large door pockets and storage compartments	•	•
Door armrests	•	•
Centre console with lid	•	•
Air-conditioning	•	•
Antenna	•	•
Cupholders	•	•
Sunglasses holder		•
Map lights		•
Driver and passenger sunvisor	•	•
Front passenger assist grips	•	•
Floor trim	Vinyl	Carpet
Courtesy lights	•	•

<b>Instrumentation</b>		
Leave key warning	•	•
Odometer, tachometer and trip meter	•	•
Oil pressure and charge warning light	•	•
Brake warning light	•	•
Low fuel warning light	•	•
Door ajar warning light	•	•
Seatbelt warning lamp	•	•
Glow indicator	•	•
Sediment filter warning light	•	•
4WD indicator light	•	•
Fuel/water temperature gauges	•	•
Sub fuel tank gauge	•	•
Digital clock	•	•



Innovation that excites

# NISSAN PATROL CAB CHASSIS

## Specifications

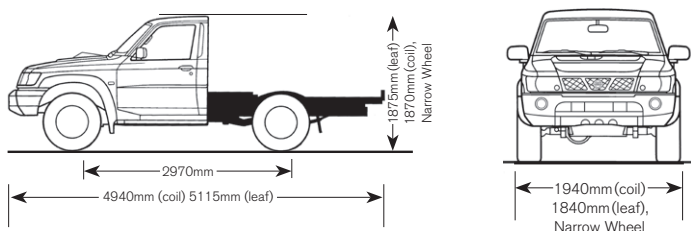
	DX Leaf 3.0 litre intercooled turbo-diesel	ST Coil 3.0 litre intercooled turbo-diesel
<b>Safety</b>		
Anti-Lock Braking System (ABS)	•	•
Driver and front passenger front-impact SRS airbags	•	•
Collapsible steering column	•	•
Door side intrusion bars	•	•
Driver and passenger 3 point ELR seatbelts	•	•
Laminated windscreen	•	•
Hazard warning lights	•	•
Manual anti-dazzle rear view mirror	•	•
<b>Exterior</b>		
Over fender flares	•	•
Side steps		•
Lockable fuel filler caps	•	•
Front mudflaps	•	•
Front & rear towing hooks	•	•
Manual folding and operated door mirrors	•	•
Front variable intermittent wiper	•	•
<b>Colours</b>		
Polar White (QM1)	S	S
Platinum (KYD)	P	P
Desert Gold (EYD)	P	P
Black Obsidian (KH3)	S	S
<b>Warranty</b>		
3 year / 100,000kms <sup>o</sup>	•	•
24-Hour Roadside Assistance Program <sup>†</sup>	•	•
myNissan Capped Price Service <sup>**</sup>		
Genuine Nissan Extended Warranty <sup>‡</sup>	Opt	Opt

Opt Optional    Not available    • Standard  
 S Standard paint    P Premium paint available at extra cost

\*\*GVM = Gross Vehicle Mass. GVM includes the driver, passengers, full fuel tank and luggage.  
<sup>o</sup> Tare mass = unladen mass of vehicle with 10 litres of fuel, excludes tray.  
<sup>†</sup> Figures have been calculated in accordance with ADR81/02. Actual fuel consumption will vary depending on driving conditions, driver behavior, the condition of your vehicle and the accessories fitted.  
<sup>‡</sup> With optional wide wheels and tyres.  
<sup>§</sup> Towing capacity is subject to towbar/towball capacity and is based on the fitment of a Genuine Nissan towbar. Towing capacity figure described is a maximum figure. Actual towing capacity depends on the laden mass of the vehicle, driving conditions, fitment of any accessories or towing equipment limitations including the maximum towball download.  
<sup>||</sup> iPod is a registered trade mark of Apple Inc.  
<sup>¶</sup> New Vehicle Warranty expires 36 months from date of first registration or after 100,000 km (whichever comes first). Conditions apply. See [nissan.com.au](http://nissan.com.au) for more details.  
<sup>\*\*</sup> Terms and conditions apply, please visit [nissan.com.au/roadsideassistance](http://nissan.com.au/roadsideassistance)  
<sup>\*\*</sup> Ask your Nissan Dealer or visit [nissan.com.au/cpsts](http://nissan.com.au/cpsts) for exclusions, eligibility and full details.  
<sup>o</sup> Conditions apply. Ask your Nissan Dealer or visit [nissan.com.au](http://nissan.com.au) for full terms and conditions.

## Dimensions

See specification pages for dimensions of all models.



## LEAF SPRING TOWBALL DOWNLOAD:

Towball Download must not exceed 250kg at GVM.<sup>†</sup> To increase the towball download above 250kg, the vehicle mass needs to be decreased as per the following table.

Towball download	Vehicle Mass
250kg	GVM <sup>†</sup> (All Variants)
300kg	Reduce loaded vehicle mass below GVM <sup>†</sup> by 85kg
320kg	Reduce loaded vehicle mass below GVM <sup>†</sup> by 120kg

## COIL SPRING TOWBALL DOWNLOAD:

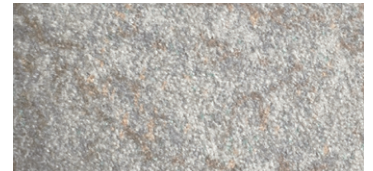
Towball Download must not exceed 100kg at GVM.<sup>†</sup> To increase the towball download above 100kg, the vehicle mass needs to be decreased as per the following table.

Towball download	Vehicle Mass
100kg	GVM <sup>†</sup> (All Variants)
150kg	Reduce loaded vehicle mass below GVM <sup>†</sup> by 115kg
200kg	Reduce loaded vehicle mass below GVM <sup>†</sup> by 200kg
250kg	Reduce loaded vehicle mass below GVM <sup>†</sup> by 290kg
300kg	Reduce loaded vehicle mass below GVM <sup>†</sup> by 365kg
320kg	Reduce loaded vehicle mass below GVM <sup>†</sup> by 400kg

If the loaded vehicle mass is reduced as shown in the table, the towball download can be increased correspondingly. Accordingly, if the laden mass is 115kg less than the GVM<sup>†</sup> a towball download of 150kg is approved. Different trailer types and different trailer manufacturers have varying towball downloads. The customer will need to contact the trailer manufacturer for information as to the download. Nissan does not recommend the fitting of load levelling or weight distribution devices when used with a Nissan Genuine towbar. When fitted and used correctly, the Nissan Genuine towbar is capable of meeting the towbar/towball capacity stated in the above table.



DX - Woven fabric interior seat trim



ST - Moquette interior seat trim



For more information please visit [nissan.com.au/owners](http://nissan.com.au/owners), ask your Nissan Dealer or phone 1800 035 035 during normal AEST business hours.

Follow us: @Nissan\_Aus

Like us: Nissan

Check out: NissanAustralia Channel



All illustrations, information and specifications presented and referred to in this brochure were correct at the time this brochure was approved for printing. The colours in the photographs may vary from actual colours. However, Nissan Motor Co (Australia) Pty. Ltd. reserves the right, subject to the laws of Australia and/or the regulations of any competent authority which may apply from time to time, at its discretion at anytime and without prior notice to discontinue or change the models, features, specifications, designs and prices of the products referred to in this brochure and any optional equipment therefore without incurring any liability whatsoever to any purchaser or prospective purchaser of any such products. Some of the items referred to herein are optional at extra cost. Some options may be required in combination with other options. Always consult your Nissan Dealer for the latest information on models, specifications, features, prices, options and availability. Nissan Motor Co (Australia) Pty. Ltd. ACN 004 663 156. Updated December 2014. PCC0134.